



University  
of Manitoba

## Backward bifurcations MATH 8xyz – Lecture 13

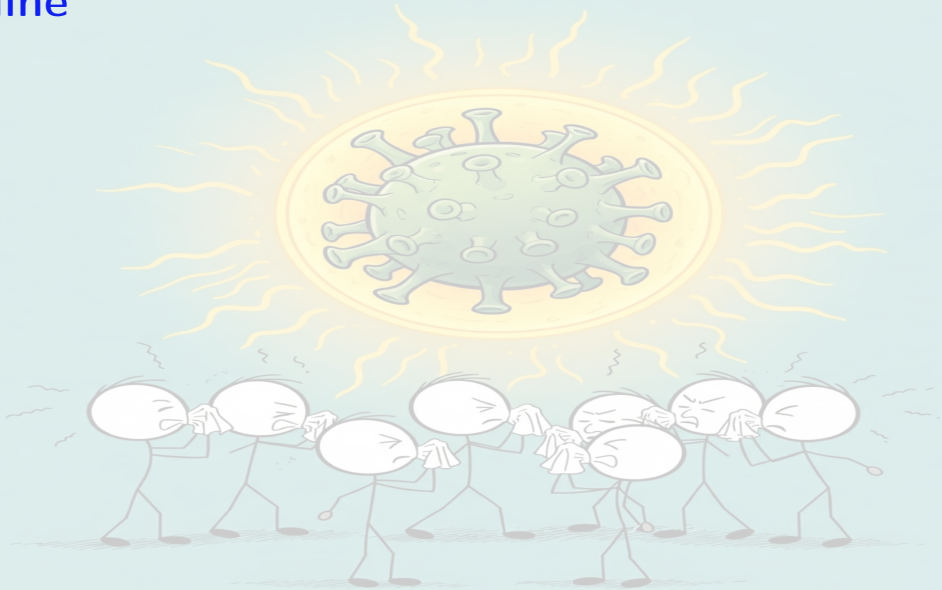
Julien Arino  
Department of Mathematics @ University of Manitoba  
Maud Menten Institute @ PIMS  
[julien.arino@umanitoba.ca](mailto:julien.arino@umanitoba.ca)

Winter 20XX

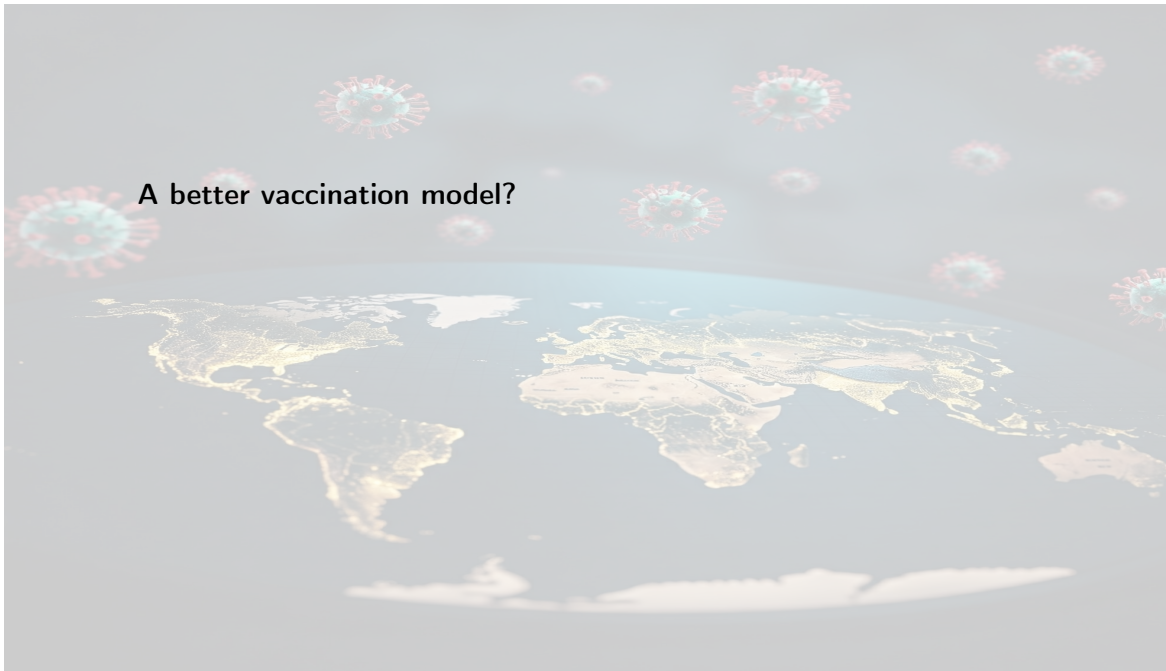
The University of Manitoba campuses are located on original lands of Anishinaabeg, Ininew, Anisininew, Dakota and Dene peoples, and on the National Homeland of the Red River Métis.

We respect the Treaties that were made on these territories, we acknowledge the harms and mistakes of the past, and we dedicate ourselves to move forward in partnership with Indigenous communities in a spirit of Reconciliation and collaboration.

# Outline



**A better vaccination model?**



## GLOBAL RESULTS FOR AN EPIDEMIC MODEL WITH VACCINATION THAT EXHIBITS BACKWARD BIFURCATION\*

JULIEN ARINO<sup>†</sup>, C. CONNELL MCCLUSKEY<sup>†</sup>, AND P. VAN DEN DRIESSCHE<sup>†</sup>

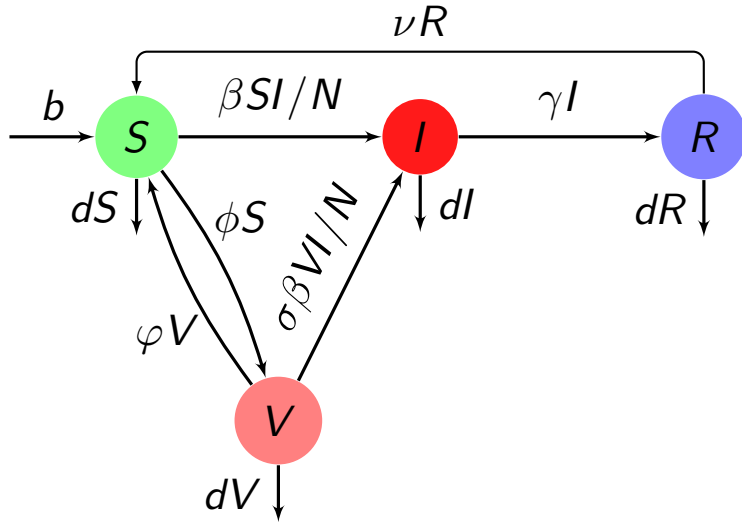
**Abstract.** Vaccination of both newborns and susceptibles is included in a transmission model for a disease that confers immunity. The interplay of the vaccination strategy together with the vaccine efficacy and waning is studied. In particular, it is shown that a backward bifurcation leading to bistability can occur. Under mild parameter constraints, compound matrices are used to show that each orbit limits to an equilibrium. In the case of bistability, this global result requires a novel approach since there is no compact absorbing set.

**Key words.** epidemic model, vaccination, backward bifurcation, compound matrices, global dynamics

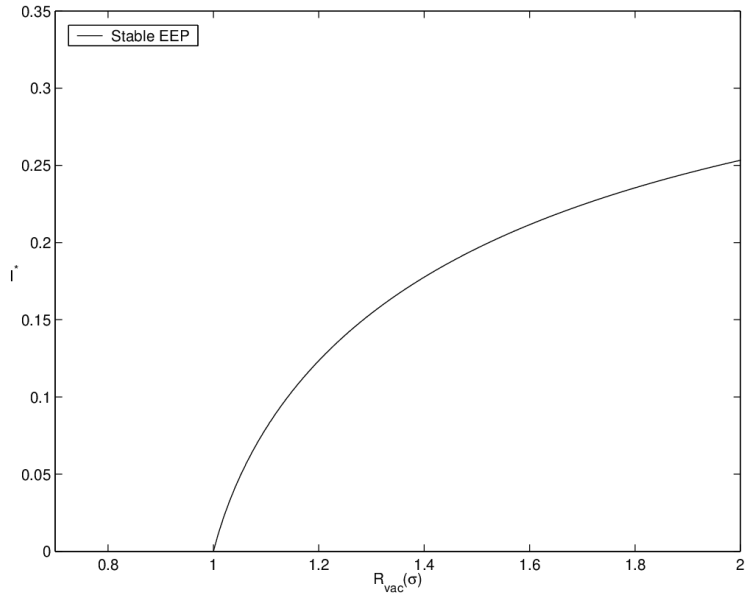
**AMS subject classifications.** 92D30, 34D23

**DOI.** 10.1137/S0036139902413829

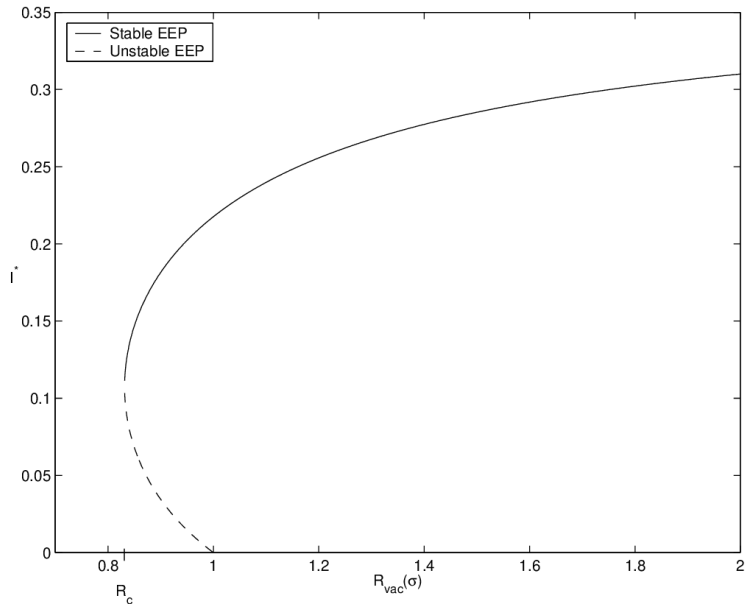
## SLIRS with vaccination



## The usual situation



## What can happen with vaccination – Backward bifurcation



# Bibliography I