



University  
of Manitoba

# Models using stochastic differential equations

## MATH 8xyz – Lecture 25

Julien Arino

Department of Mathematics @ University of Manitoba

Maud Menten Institute @ PIMS

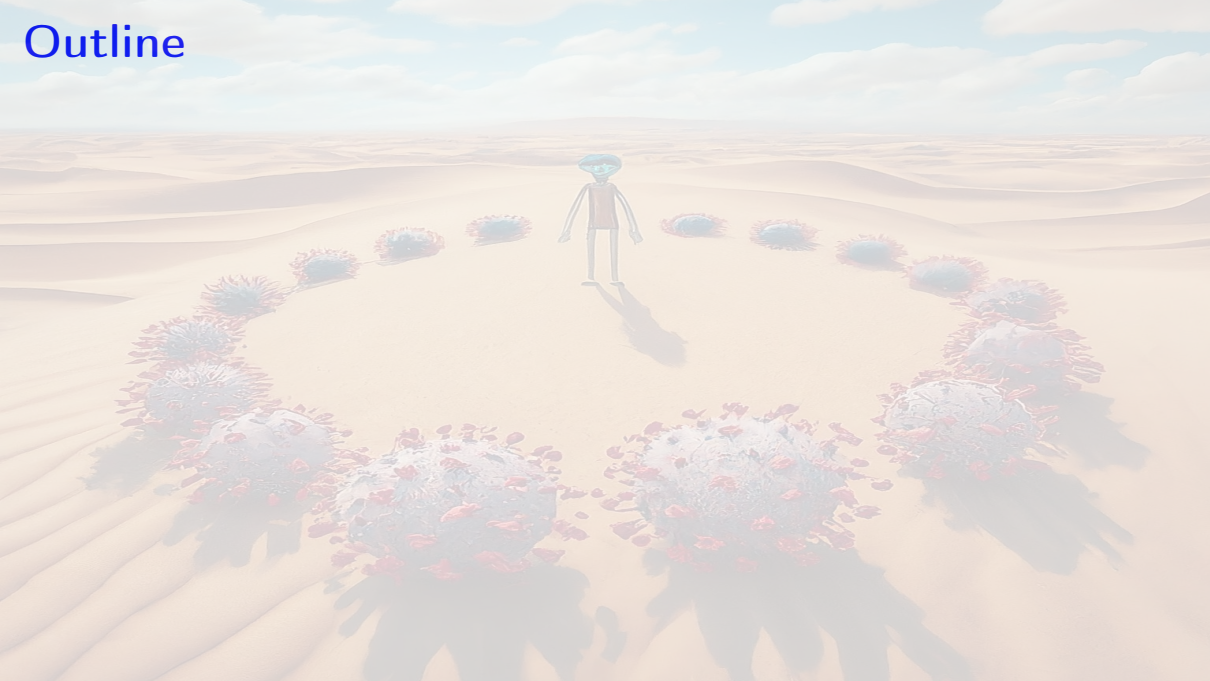
[julien.arino@umanitoba.ca](mailto:julien.arino@umanitoba.ca)

Winter 20XX

The University of Manitoba campuses are located on original lands of Anishinaabeg, Ininew, Anisininew, Dakota and Dene peoples, and on the National Homeland of the Red River Métis.

We respect the Treaties that were made on these territories, we acknowledge the harms and mistakes of the past, and we dedicate ourselves to move forward in partnership with Indigenous communities in a spirit of Reconciliation and collaboration.

# Outline



# Bibliography I